

Mi-T-M[®] CORPORATION

8650 Enterprise Drive, Peosta IA 52068

563-556-7484 / Fax 563-556-1235

www.mitm.com

PARTS LIST FOR ***CWC-4004-1MGV*** (AFTER SERIAL #10182543)

Engine Oil Grade:

Above 40°F=SAE 30

Below 40°F=SAE 10W-30

Engine Oil Capacity:

56 oz.

Pump Oil Grade:

Mi-T-M Pump Oil #AW-4085-0016

Pump Oil Capacity:

32 oz.

Nozzle Size:

4.0

This Parts Listing has been compiled for your benefit. You can be assured your Mi-T-M Cold Water Pressure Washer was constructed and designed with quality and performance in mind using over 25 years experience in the pressure washer business. Each component has been rigorously tested to insure the highest level of acceptance.

The contents of this Parts Listing are based on the latest product information available at the time of publication. Mi-T-M reserves the right to make changes in price, color, materials, equipment, specifications or models at any time without notice.

WARNING

THIS IS A PROFESSIONAL HIGH PRESSURE, COLD WATER PRESSURE WASHER. CAUTION SHOULD BE OBSERVED WHEN USING OR REPAIRING THIS UNIT! READ AND FOLLOW THE SAFETY WARNINGS LISTED BELOW BEFORE ATTEMPTING ANY REPAIRS ON THIS PRESSURE WASHER!

SAFETY WARNINGS

1. NEVER alter or modify the equipment. Be sure any accessory items and system components being used will withstand the pressure developed. Use only genuine Mi-T-M parts for repair of your pressure washer. Failure to do so can cause hazardous operating conditions and will VOID warranty.
2. NEVER make adjustments on machinery while the unit is connected to the power source. Turning over the machinery by hand during adjustment or cleaning might start the machinery, causing serious injury to the operator.
3. Know how to stop and bleed pressures quickly. Be thoroughly familiar with controls.
4. Before servicing the unit, turn unit off, relieve the water pressure and allow the unit to cool down. Do not make repairs while the unit is running. Service in a clean, dry, flat area.
5. After testing the machine, DO NOT leave the pressurized unit unattended. Shut off the unit and release trapped pressure before leaving.

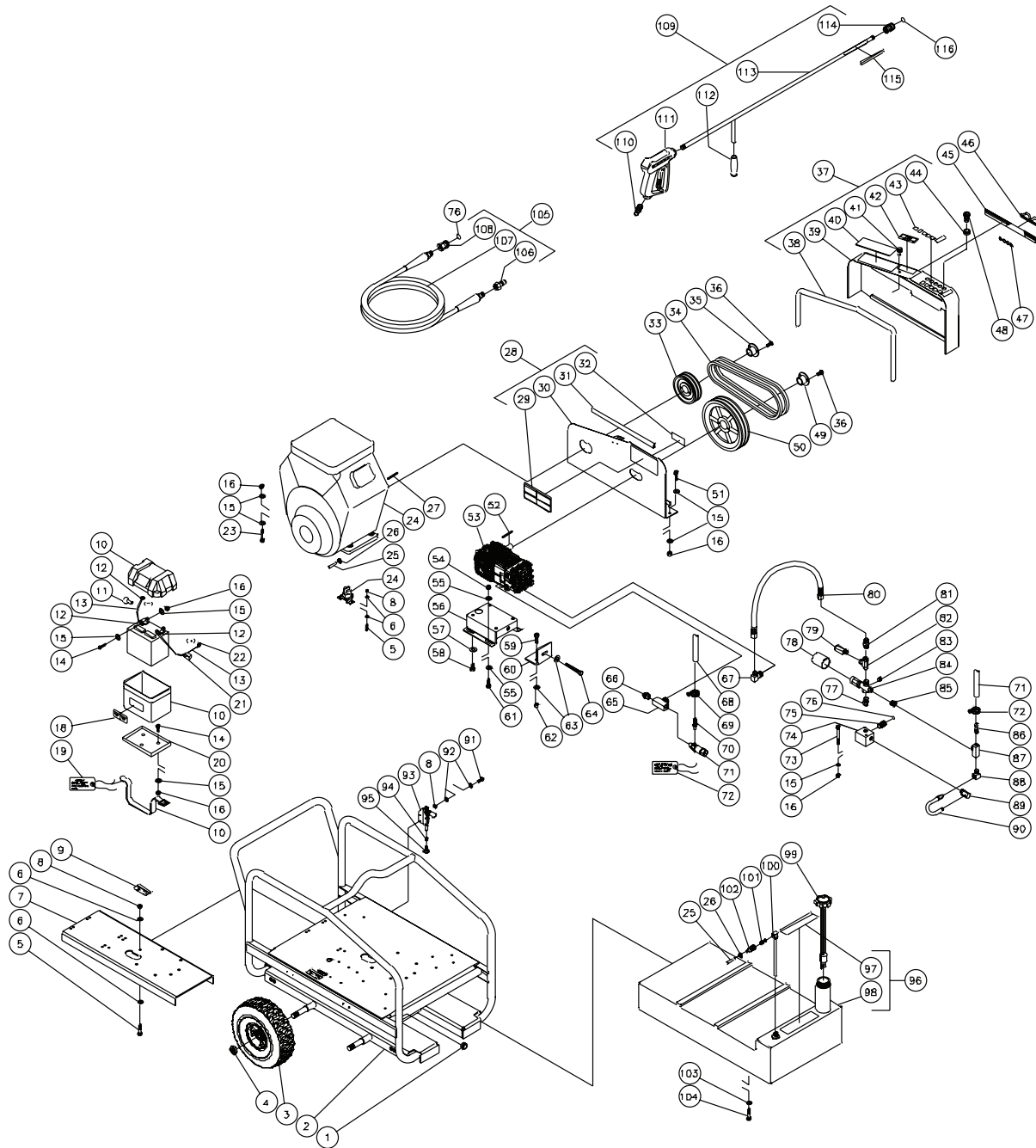
Table of Contents

SPECIFICATIONS	3
FRAME ASSEMBLY FOR CWC-4004-1MGV (AFTER SERIAL #10073651)	4
PUMP ASSEMBLY (3-0213) (AFTER SERIAL #10182543)	6
UNLOADER ASSEMBLY (8-0522)	8
GUN ASSEMBLY (16-0001)	10
MOTOR ASSEMBLY (851-0345)	12
NOTES	14-15

SPECIFICATIONS

MODEL NUMBER	CWC-4004-1MGV
Operating Pressure (PSI/Bar):	4000/276
High Pressure Nozzle:	4.0
Water Volume (GPM/lpm):	4.0/15.1
Engine:	Briggs & Stratton Vanguard
Horsepower	16.0
Engine Type	4 Stroke, Overhead Valve, V-Twin
Oil Type	Above 40°F = SAE30/Below 40°F = SAE10W-30
Oil Capacity (oz./liter)	56/1.66
Low Oil Protection	Oil Guard™
Fuel Type	Unleaded Gasoline 86 Octane Minimum
Fuel Capacity (gal./liter)	11.5/43.5
Starting	Electric
Maximum No Load RPM	3600 (+/- 100) RPM
Heat Dump Valve	Relieves heated water during unloader bypass stage
Pump:	Belt Driven, Oil Bath, Triplex Piston
Oil Type	Mi-T-M Pump Oil #AW-4085-0016
Oil Capacity (oz./liters)	32 oz.
Plungers	Ceramic
Manifold	Forged Brass
Valves	Stainless Steel
Unloader	Preset
Heat Dump Valve	Relieves heated water during unloader bypass stage
Detergent Injector	Adjustable low pressure down stream from pump
Unloader	Preset
Unit Net Weight (lbs/Kg)	358/162
Unit Shipping Weight (lbs/Kg)	481/218
Unit Net Dimension (in/cm)	43Lx27.75Wx36H/109Lx70.5Wx91.5H
Unit Shipping Dimension (in/cm)	46.5Lx31.5Wx48.5H/118Lx80Wx123H

FRAME ASSEMBLY FOR CWC-4004-1MGV (AFTER SERIAL #10073651)



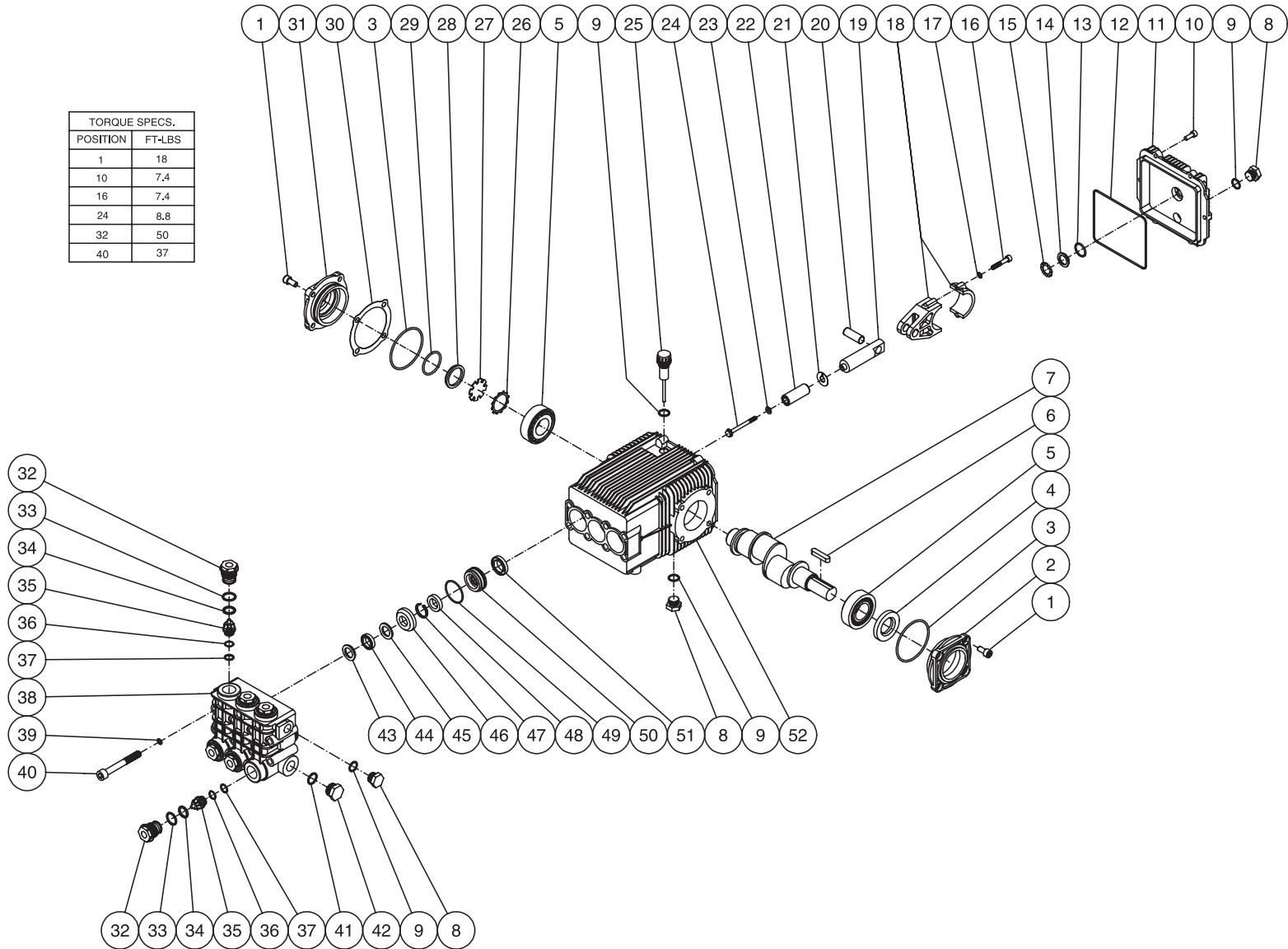
CWC-4004-1MGV-050903-DLG

FRAME ASSEMBLY FOR CWC-4004-1MGV (AFTER SERIAL #10073651)											
REF. #	DESCRIPTION	PART #	QTY.	REF. #	DESCRIPTION	PART #	QTY.	REF. #	DESCRIPTION	PART #	QTY.
1	Grommet	33-0002	2	41	Fastener	33-0197	1	79	Safety Valve	22-0319	1
2	Frame Assembly	5-0136A42	1	42	Decal- Warning: Muffler Hot (See 34-9017)	N/A Sep.	1	80	High Pressure Cross-Over Hose	15-0177	1
3	Wheel	14-0092	4	43	Decal-Die Cut Nozzles	34-0500	1	81	Nipple	24-0002	1
4	Jamnut	30-0117	4	44	Grommet	33-0001	5	82	Tee	24-0026	1
5	Bolt	27-0016	3	45	Decal-Mi-T-M Stripe Large	34-0501	1	83	Plug	39-0017	1
6	Washer	28-0021	6	46	Mi-T-M Logo	62-0086	1	84	Unloader	8-0522	1
7	Support Bracket	13-0120A01	1	47	Decal-White Die Cut 4004	34-0261	1	85	Bushing	23-0016	1
8	Nut	30-0155	3	48	Spray Nozzle-0004	18-0028	1	86	Barb	23-0105	1
9	Decal- Data Plate	N/A	1	-	Spray Nozzle-1504	18-0029	1	87	Branch Tee	23-0117	1
10	Battery Box	33-0092	1	-	Spray Nozzle-2504	18-0030	1	88	Elbow	23-0324	1
11	Terminal Protector	33-0273	1	-	Spray Nozzle-4004	18-0031	1	89	Easy Start Valve	22-0242	1
12	Terminal Ring	32-0097	3	49	Bushing	9-0017	1	90	Hose *(One Foot Required)	15-0140	1
13	Battery Cable *(Four Feet Required) Pos.=22"	32-0065	1	50	Sheave	10-0037	1	91	Bolt	27-0015	2
-	Battery Cable *(Four Feet Required) Neg.=16"	32-0065	1	51	Bolt	27-0067	4	92	Washer	28-0002	4
14	Bolt	27-0066	4	52	Key w/Pump	43-0091	1	93	Toggle Clamp	33-0400	1
15	Washer	28-0003	26	53	Pump	3-0213	1	94	Hex Nut	30-0004	1
16	Ny-Lock Nut	30-0157	14	54	Locknut	30-0161	4	95	Bolt	27-9550	1
17	Battery	32-0058	1	55	Washer	28-0030	8	96	Fuel Tank Assembly (Inc. 97, 98)	851-0319	1
18	Decal- Caution: Disconnect Battery (See 34-9017)	N/A Sep.	1	56	Pump Bracket	5-0101A01	1	97	Decal- Caution: Gas Only (See 34-9017)	N/A Sep.	1
19	Tag- Battery	34-0096	1	57	Washer	29-0055	4	98	Fuel Tank (See 851-0319)	N/A Sep.	1
20	Battery Retainer	20-0264A01	1	58	Bolt	27-8471	4	99	Fuel Cap w/Gauge	12-0061	1
21	Terminal Protector	33-0004	1	59	Bolt	27-0118	2	100	Fuel Pick-up	33-0271	1
22	Terminal Ring	32-0098	1	60	Brace Tightener	13-0003A01	1	101	Quick Connect Plug	17-0038	1
23	Bolt	27-0071	4	61	Bolt	27-0167	4	102	Quick Connect Socket	17-0018	1
24	Motor Assembly	851-0345	1	62	Locknut	30-0159	2	103	Washer	28-0022	4
25	Fuel Line *(Three Feet Required)	15-0031	1	63	Washer	28-0023	3	104	Bolt	27-9524	4
26	Hose Clamp	42-0004	2	64	Bolt	27-0576	1	105	Pressure Hose Assembly (Inc. 106-108)	851-0006	1
27	Key	43-0078	1	65	Branch Tee	23-0235	1	106	Quick Connect Plug	17-0006	1
28	Beltguard Back Assembly (Inc. 29-32)	851-0310	1	66	Thermal Relief Valve	22-0005	1	107	Pressure Hose	15-0004	1
29	Decal- Warning/Caution (See 34-9017)	N/A Sep.	1	67	Elbow	24-0092	1	108	Quick Connect Socket	17-0004	1
30	Beltguard Back (See 851-0310)	N/A Sep.	1	68	Hose *(Three Feet Required)	15-0007	1	109	Gun/Lance Assembly (Inc. 110-114)	851-0095	1
31	Edging *(Two Feet Required)	33-0020	1	69	Worm Clamp	42-0011	2	110	Quick Connect Plug	17-0005	1
32	Decal- Warning: Beltguard (See 34-9017)	N/A Sep.	1	70	Hose Barb	23-0120	1	111	Gun	16-0001	1
33	Sheave	10-0118	1	71	Inlet Filter	19-0207	1	112	Grip Handle	7-0002	1
34	Belt	11-0055	2	72	Tag- Water Inlet Supply (See 34-9017)	N/A Sep.	1	113	Lance	16-0120A01	1
35	Bushing	9-0005	1	73	Bolt	27-0074	2	114	Quick Connect	17-0001	1
36	Bolt	27-0015	4	74	Manifold Block	51-0020	1	115	Decal- Warning: Risk of Injection (See 34-9016)	N/A Sep.	1
37	Beltguard Cover Assembly (Inc. 38-44)	851-0348	1	75	Quick Connect Socket	17-0007	1	116	O-ring (Replacement Only)	25-0122	-
38	Edging *(Four Feet Required)	33-0020	1	76	O-ring (Replacement Only)	25-0123	-		Safety Decal Kit (Inc. 18, 29, 32, 40, 42, 97, 115)	34-9017	
39	Beltguard Cover (See 851-0348)	N/A Sep.	1	77	Nipple	24-0010	1				
40	Decal- Operating Instructions (See 34-9017)	N/A Sep.	1	78	Heat Shrink Tubing *(One Foot Required)	33-0272	1				

*Must Order in One Foot Lengths

PUMP ASSEMBLY (3-0213) (AFTER SERIAL #10182543)

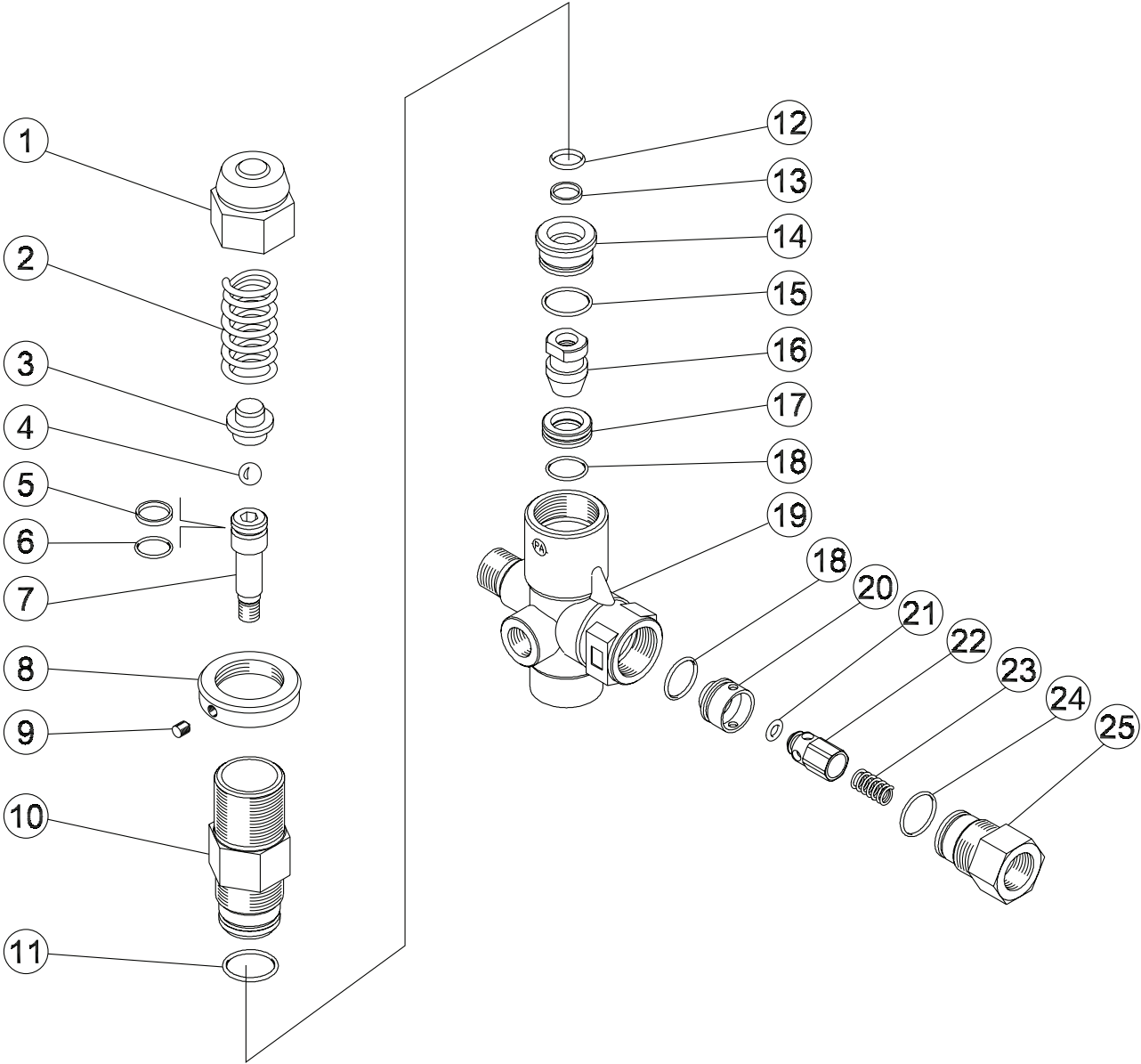
TORQUE SPECS.	
POSITION	FT-LBS
1	18
10	7.4
16	7.4
24	8.8
32	50
40	37



3-0213-040105-JJF

PUMP ASSEMBLY (3-0213) (AFTER SERIAL #10182543)											
REF. #	DESCRIPTION	PART #	QTY.	REF. #	DESCRIPTION	PART #	QTY.	REF. #	DESCRIPTION	PART #	QTY.
1	Screw	27-8884	8	20	Connecting Rod Pin	46-0914	3	36	Backup Ring	25-0516	6
2	Shaft Cover	46-0909	1	21	Washer	46-0916	3	37	O-ring	25-0407	6
3	O-ring	25-0512	2	22	Piston	46-0917	3	38	Pump Manifold	46-0900	1
4	Oil Seal	26-0243	1	23	Washer	29-0014	3	39	Lockwasher	29-0153	8
5	Bearing	48-0073	2	24	Screw	27-8965	3	40	Screw	27-8470	8
6	Key w/Pump	43-0091	1	25	Oil Dipstick	39-0204	1	41	O-ring	25-0372	1
7	Crankshaft	N/A	1	26	Oil Sight Glass Spring Retainer	46-0924	1	42	Plug	39-0202	1
8	Plug	39-0203	3	27	Oil Reflector	46-0925	1	43	Support Ring (See 70-0317)	N/A Sep.	3
9	O-ring	25-0510	4	28	Oil Sight Glass	46-0926	1	44	High Pressure Seal (See 70-0317)	N/A Sep.	3
10	Screw	27-8888	6	29	O-ring	25-0514	1	45	Backup Ring (See 70-0317)	N/A Sep.	3
11	Crankcase Cover (Inc. 8, 9, 13-15)	46-0912	1	30	Shim- .05 mm	46-0947	-	46	Guide Front	46-1001	3
12	O-ring	25-0513	1	-	Shim- .10 mm	46-0948	-	47	Backup Ring (See 70-0317)	N/A Sep.	3
13	O-ring	25-0370	1	-	Shim- .19 mm	46-0949	-	48	Low Pressure Seal (See 70-0317)	N/A Sep.	3
14	Oil Sight Glass	46-0670	1	-	Shim- .25 mm	46-0950	-	49	O-ring (See 70-0317)	N/A Sep.	3
15	Oil Sight Glass Spring Retainer	46-0671	1	31	Bearing Cover	46-0918	1	50	Guide Rear	46-1200	3
16	Screw	N/A	6	32	Valve Cap	39-0201	6	51	Oil Seal	26-0242	3
17	Lockwasher	N/A	6	33	Back-up Ring	25-0509	6	52	Crankcase	46-0911	1
18	Connecting Rod (Inc. 16-17)	46-0913	3	34	O-ring	25-0386	6		Valve Kit (Inc. 6 each 35-37)	70-0314	1
19	Plunger Rod	46-0915	3	35	Backup Ring Valve (See 70-0314)	N/A Sep.	6		Water Seals Kit (Inc. 3 each 43-45, 47-49)	70-0317	1

UNLOADER ASSEMBLY (8-0522)

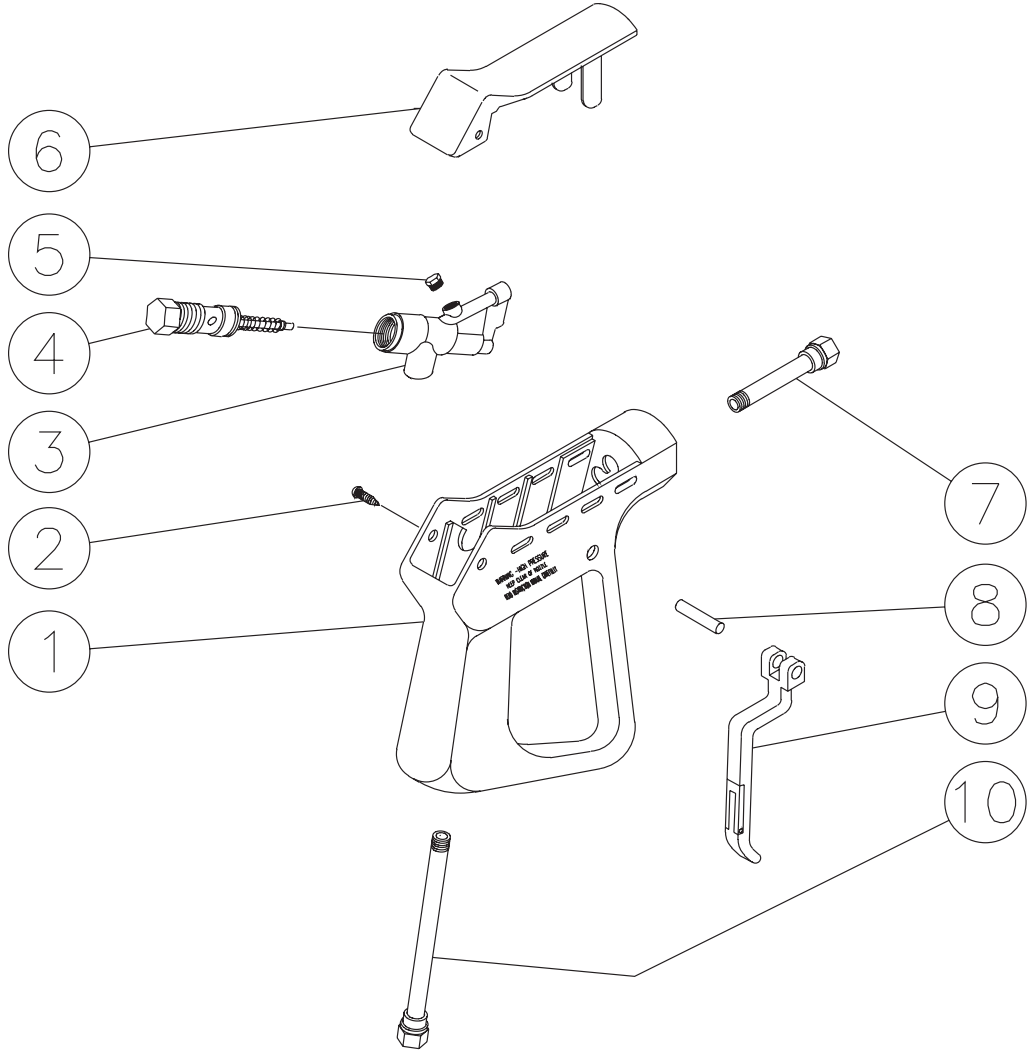


8-0522-120501-RD

UNLOADER ASSEMBLY (8-0522)

REF. #	DESCRIPTION	PART #	QTY.	REF. #	DESCRIPTION	PART #	QTY.
1	Brass Cap	8-0534	1	15	O-ring	25-0368	1
2	Spring	49-0149	1	16	Shutter	8-0540	1
3	Spring Guide	8-0535	1	17	Seat	8-0541	1
4	Ball	8-0318	1	18	O-ring	25-0220	2
5	Back-up Ring (See 70-0342)	N/A Sep.	1	19	Valve Body	8-0542	1
6	O-ring (See 70-0342)	N/A Sep.	1	20	Check Valve Seat	8-0543	1
7	Piston	8-0536	1	21	O-ring	25-0369	1
8	Lock Ring	8-0537	1	22	Check Valve	8-0486	1
9	Set Screw	8-0408	1	23	Spring	49-0150	1
10	Piston Housing	8-0538	1	24	O-ring	25-0325	1
11	O-ring	25-0189	1	25	Nipple	8-0485	1
12	Back-up Ring (See 70-0343)	N/A Sep.	1		Upper Seal Kit (Inc. 5, 6)	70-0342	1
13	O-ring (See 70-0343)	N/A Sep.	1		Lower Seal Kit (Inc. 12, 13)	70-0343	1
14	Spacer	8-0539	1				

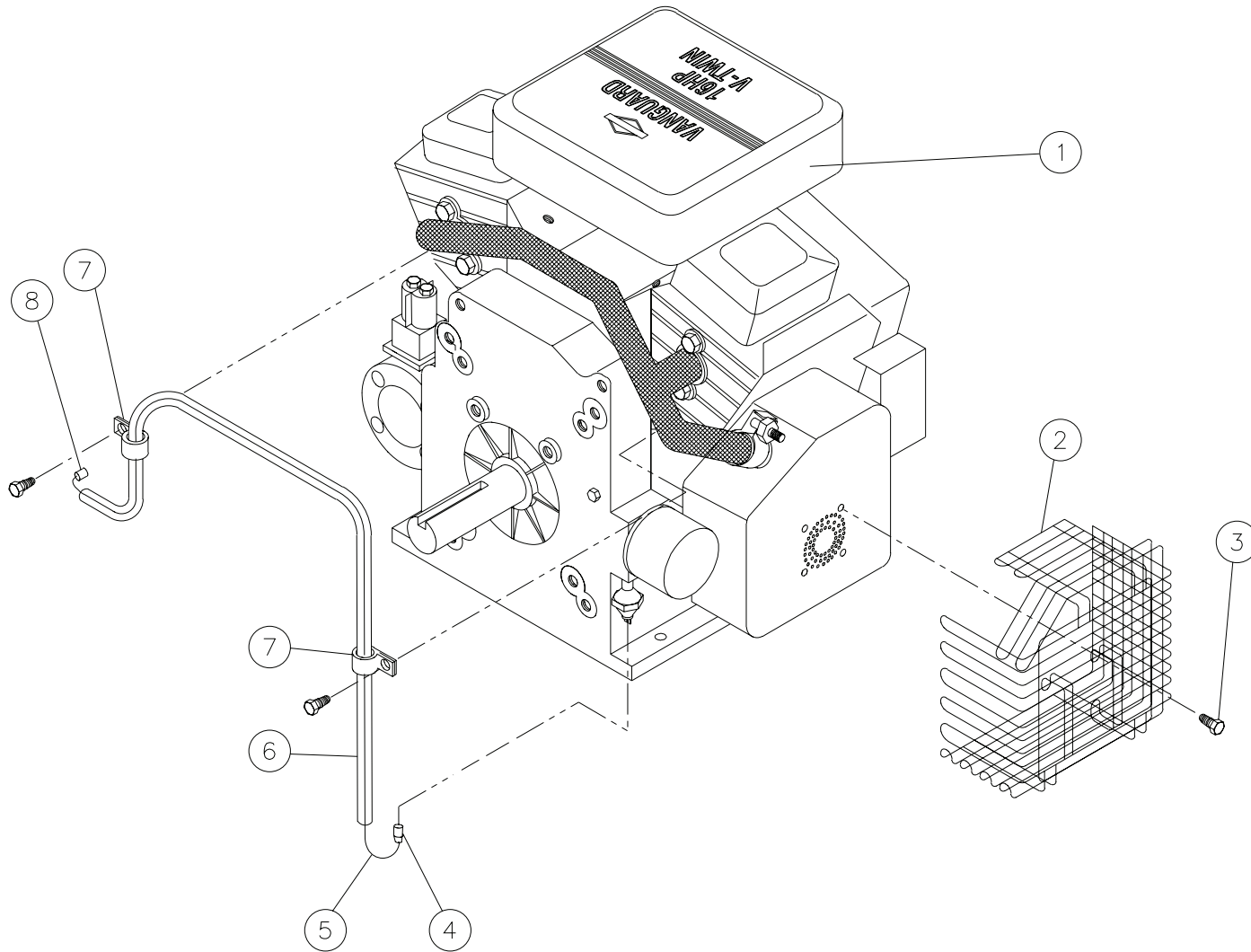
GUN ASSEMBLY (16-0001)



16-0001-110399-RD

GUN ASSEMBLY (16-0001)			
REF. #	DESCRIPTION	PART #	QTY.
1	Plastic Housing	16-0008	1
2	Screw	27-3230	2
3	Brass Housing	16-0012	1
4	Gun Repair Kit	70-0055	1
5	Brass Plug	39-0024	1
6	Plastic Cover	16-0009	1
7	Pipe Assembly	16-0013	1
8	Trigger Pin	16-0063	1
9	Trigger/Safety Lock-off	16-0010	1
10	Pipe Assembly- Inlet	16-0016	1
	Complete Gun Assembly	16-0001	1

MOTOR ASSEMBLY (851-0345)



851-0345-080900-EDW

MOTOR ASSEMBLY (851-0345)			
REF. #	DESCRIPTION	PART #	QTY.
1	Engine- 16.0 HP Vanguard	1-0105	1
2	Muffler Guard	6-0065	1
3	Screw	27-3062	4
4	Terminal	32-0221	1
5	Wire	32-0092	1
6	Hose	15-0021	1
7	Wire Fastener Clip	43-0003	2
8	Terminal	32-0099	1

NOTES

NOTES

